

**Anti-FOXP1 Antibody**  
**Rabbit polyclonal antibody to FOXP1**  
**Catalog # AP60672****Specification**

---

**Anti-FOXP1 Antibody - Product Information**

Application	WB
Primary Accession	<a href="#">O9H334</a>
Other Accession	<a href="#">P58462</a>
Reactivity	Human, Mouse, Rat, Bovine
Host	Rabbit
Clonality	Polyclonal
Calculated MW	75317

**Anti-FOXP1 Antibody - Additional Information****Gene ID** 27086**Other Names**

Forkhead box protein P1

**Target/Specificity**

Recognizes endogenous levels of FOXP1 protein.

**Dilution**

WB~~WB (1/500 - 1/1000)

**Format**

Liquid in 0.42% Potassium phosphate, 0.87% Sodium chloride, pH 7.3, 30% glycerol, and 0.09% (W/V) sodium azide.

**Storage**

Store at -20 °C.Stable for 12 months from date of receipt

**Anti-FOXP1 Antibody - Protein Information****Name** FOXP1**Function**

Transcriptional repressor (PubMed:<a href="http://www.uniprot.org/citations/18347093" target="\_blank">18347093</a>, PubMed:<a href="http://www.uniprot.org/citations/26647308" target="\_blank">26647308</a>). Can act with CTBP1 to synergistically repress transcription but CTBP1 is not essential (By similarity). Plays an important role in the specification and differentiation of lung epithelium. Acts cooperatively with FOXP4 to regulate lung secretory epithelial cell fate and regeneration by restricting the goblet cell lineage program; the function may involve regulation of AGR2. Essential transcriptional regulator of B-cell development. Involved in regulation of cardiac muscle cell proliferation. Involved in the columnar organization of spinal motor neurons. Promotes the formation of the lateral motor neuron column (LMC) and the

preganglionic motor column (PGC) and is required for respective appropriate motor axon projections. The segment-appropriate generation of spinal cord motor columns requires cooperation with other Hox proteins. Can regulate PITX3 promoter activity; may promote midbrain identity in embryonic stem cell-derived dopamine neurons by regulating PITX3. Negatively regulates the differentiation of T follicular helper cells (TFH)s. Involved in maintenance of hair follicle stem cell quiescence; the function probably involves regulation of FGF18 (By similarity). Represses transcription of various pro-apoptotic genes and cooperates with NF- $\kappa$ B-signaling in promoting B-cell expansion by inhibition of caspase-dependent apoptosis (PubMed:<a href="http://www.uniprot.org/citations/25267198" target="\_blank">25267198</a>). Binds to CSF1R promoter elements and is involved in regulation of monocyte differentiation and macrophage functions; repression of CSF1R in monocytes seems to involve NCOR2 as corepressor (PubMed:<a href="http://www.uniprot.org/citations/15286807" target="\_blank">15286807</a>, PubMed:<a href="http://www.uniprot.org/citations/18347093" target="\_blank">18347093</a>, PubMed:<a href="http://www.uniprot.org/citations/18799727" target="\_blank">18799727</a>). Involved in endothelial cell proliferation, tube formation and migration indicative for a role in angiogenesis; the role in neovascularization seems to implicate suppression of SEMA5B (PubMed:<a href="http://www.uniprot.org/citations/24023716" target="\_blank">24023716</a>). Can negatively regulate androgen receptor signaling (PubMed:<a href="http://www.uniprot.org/citations/18640093" target="\_blank">18640093</a>). Acts as a transcriptional activator of the FBXL7 promoter; this activity is regulated by AURKA (PubMed:<a href="http://www.uniprot.org/citations/28218735" target="\_blank">28218735</a>).

**Cellular Location**

Nucleus. Note=Not found in the nucleolus

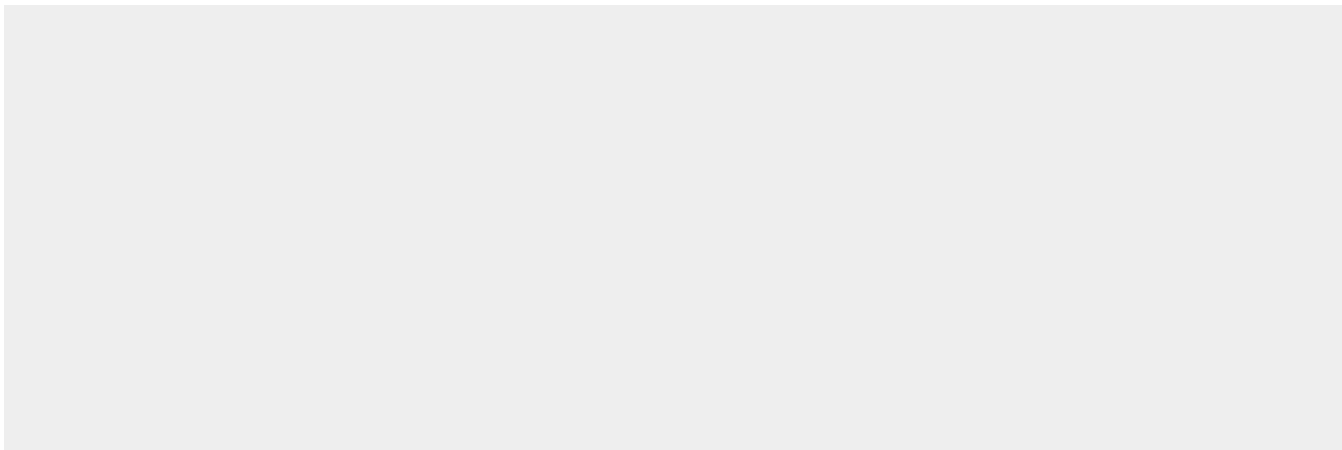
**Tissue Location**

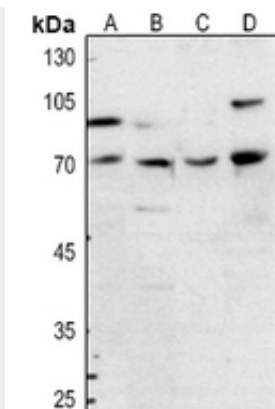
Isoform 8 is specifically expressed in embryonic stem cells.

**Anti-FOXP1 Antibody - Protocols**

Provided below are standard protocols that you may find useful for product applications.

- [Western Blot](#)
- [Blocking Peptides](#)
- [Dot Blot](#)
- [Immunohistochemistry](#)
- [Immunofluorescence](#)
- [Immunoprecipitation](#)
- [Flow Cytometry](#)
- [Cell Culture](#)

**Anti-FOXP1 Antibody - Images**



Western blot analysis of FOXP1 expression in HEK293T (A), HGC27 (B), mouse lung (C), rat lung (D) whole cell lysates.

#### **Anti-FOXP1 Antibody - Background**

KLH-conjugated synthetic peptide encompassing a sequence within the C-term region of human FOXP1. The exact sequence is proprietary.